

IVY LEAF DRY EXTRACT

(*Hedera helix* L.)

BOTANICAL DESCRIPTION:

Cut dried leaves of *Hedera helix* L.

Accurate selection and identification Ivy leaf according to current monograph of European Pharmacopoeia: "2148: Ivy leaf".



EXTRACT INFORMATION:

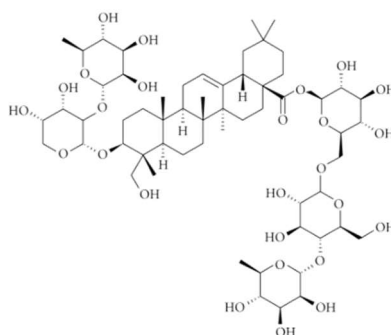
Ivy Leaf Dry Extract is obtained from the leaves of *Hedera helix* L. by hydroalcoholic extraction.

INCI Name: HEDERA HELIX LEAF EXTRACT

CAS: 84082-54-2

EINECS: 282-000-2

ANALYTICAL MARKERS: Hederacoside C



Select Botanicals Extracts comply with the requirements of any relevant monograph in the European Pharmacopoeia and/or European Directives applicable to the end use of the extract.

Select Botanical, S.L. manufactures Highest Quality Extracts following strictest Quality Management System in compliance with the "Good Manufacturing Practices" (GMP) requirements, carrying on the last manufacturing steps in classified areas (Clean Rooms).

PHYTOTHERAPY INDICATIONS:

- Herbal medicinal product used as an expectorant in case of productive cough. ^(2,3)
- As adjuvant treatment of inflammatory bronchial diseases. ⁽²⁾

- Spasmolytic ^(1,2,3)
- Broncho-dilatating ^(1,2,3)
- Secretolytic ^(1,2,3)
- Anti-inflammatory ^(1,2,3)

ACTIVITIES AND PHARMACOLOGICAL STUDIES:

- **Spasmolytic and broncho-dilating effect:** It has been documented *in vitro* experiments and *in vivo* studies in the compressed air model in conscious guinea pig. Saponins and phenolic compounds isolated from a 30% ethanolic extract of ivy leaf exhibited spasmolytic activity against acetylcholine-induced contractions of isolated guinea pig ileum. ^(2,4)
- **Anti-inflammatory activity:** The anti-inflammatory effects have been shown in different *in vivo* models, for example, with orally administered ethanol ivy leaf extract. ^(2,4)
- **Secretolytic effect** ^(1,2,3,4)

DOSAGE AND ADMINISTRATION:

Dosage and administration:

Ivy leaf may be found formulated in liquid and solid preparations.

Recommended dosage and administration are indicated in the European Union Herbal Monograph on *Hedera helix* L, folium. **EMA/HMPC/325716/2017**

Undesirable effects:

There are no reported toxic effects or intolerance phenomenon to normal use doses.

Allergic reactions and gastrointestinal reactions have been reported. ⁽⁴⁾

Precautions/Contraindications:

In the absence of enough data, the use during pregnancy and lactation is not recommended. ^(2,3)

Children under 2 years of age because of the general risk of aggravation of respiratory symptoms through secretolytic drugs.

BIBLIOGRAPHY AND OTHER REFERENCE SOURCES:

1. Blumental. The Complete German Commission E Monographs. Therapeutic Guide to Herbal Medicines. American Botanical Council. Austin, Texas 1998.
2. ESCOP Monographs. Second edition. 2003
3. European Union Herbal Monograph on *Hedera helix* L, folium. EMA/HMPC/325716/2017. November 2017.
4. Assessment report on *Hedera helix* L, folium. EMA/HMPC/325715/2017. November 2017.